

NOTICE!!

These documents have been scanned!

Do not place un-scanned documents beneath this notice!

Do not remove this notice from this file!

GPO Jacket No. 560-102
Print Order 61540
Rise Business Services, LLC
Job=AZ15 7/9/2019



Box Number= AZ15153



Claim Begin-End: AMC450289-AMC450304

1 Initial Receipt



AZ15153-3

AMC449739-AMC451385

United States Department of the Interior
Bureau of Land Management
 DIV OF LANDS, MINRLS & ENERGY
 ONE N CENTRAL AVE
 PHOENIX, AZ 85004 -4427
 Phone: 602-417-9200

Receipt

No: 4135113

Transaction #: 4248844	
Date of Transaction: 04/10/2018	
CUSTOMER:	
	TECK AMERICAN INCORPORATED 501 N RIVERPOINT BLVD STE 300 PO BOX 3087 SPOKANE, WA 99202-1649 US

ENTERED
 APR 16 2018
 BY: RAM

LINE #	QTY	DESCRIPTION	REMARKS	UNIT PRICE	TOTAL
1	16.00	LOCATABLE MINERALS / MINING CLAIMS-NEW, UNADJUD, ONE OR MORE AUTH NOS / NEW MINING CLAIM PROCESSING FEE CASES: AMC450289/\$20.00, AMC450290/\$20.00, AMC450291/\$20.00, AMC450292/\$20.00, AMC450293/\$20.00, AMC450294/\$20.00, AMC450295/\$20.00, AMC450296/\$20.00, AMC450297/\$20.00, AMC450298/\$20.00, AMC450299/\$20.00, AMC450300/\$20.00, AMC450301/\$20.00, AMC450302/\$20.00, AMC450303/\$20.00, AMC450304/\$20.00		- n/a -	320.00
2	16.00	LOCATABLE MINERALS / MINING CLAIMS-NEW, UNADJUD, ONE OR MORE AUTH NOS / NEW MINING CLAIMS LOCATION FEE CASES: AMC450289/\$37.00, AMC450290/\$37.00, AMC450291/\$37.00, AMC450292/\$37.00, AMC450293/\$37.00, AMC450294/\$37.00, AMC450295/\$37.00, AMC450296/\$37.00, AMC450297/\$37.00, AMC450298/\$37.00, AMC450299/\$37.00, AMC450300/\$37.00, AMC450301/\$37.00, AMC450302/\$37.00, AMC450303/\$37.00, AMC450304/\$37.00		- n/a -	592.00
3	16.00	LOCATABLE MINERALS / MINING CLAIMS-NEW, UNADJUD, ONE OR MORE AUTH NOS / NEW MINING CLAIMS MAINTENANCE FEE CASES: AMC450289/\$155.00, AMC450290/\$155.00, AMC450291/\$155.00, AMC450292/\$155.00, AMC450293/\$155.00, AMC450294/\$155.00, AMC450295/\$155.00, AMC450296/\$155.00,		- n/a -	2480.00

	AMC450297/\$155.00, AMC450298/\$155.00, AMC450299/\$155.00, AMC450300/\$155.00, AMC450301/\$155.00, AMC450302/\$155.00, AMC450303/\$155.00, AMC450304/\$155.00			
TOTAL:				\$3,392.00

PAYMENT INFORMATION				
1	AMOUNT:	3392.00	POSTMARKED:	N/A
	TYPE:	CHECK	RECEIVED:	04/06/2018
	CHECK NO:	211422		
	NAME:	TECK AMERICAN INCORPORATED BOX 3087 SPOKANE WA 99202-1649 US		

REMARKS

This receipt was generated by the automated BLM Collections and Billing System and is a paper representation of a portion of the official electronic record contained therein.

NOTICE!!

These documents have been scanned!

Do not place un-scanned documents beneath this notice!

Do not remove this notice from this file!

GPO Jacket No. 560-102
Print Order 61540
Rise Business Services, LLC
Job=AZ15 7/9/2019



Box Number= AZ15153



Claim Begin-End: AMC450289-AMC450304

2 Correspondence



AZ15153-3

AMC449739-AMC451385

**NO
DOCUMENTS
FOUND**

NO DOCUMENTS FOUND
NO DOCUMENTS FOUND

NOTICE!!

These documents have been scanned!

Do not place un-scanned documents beneath this notice!

Do not remove this notice from this file!

GPO Jacket No. 560-102
Print Order 61540
Rise Business Services, LLC
Job=AZ15 7/9/2019



Box Number= AZ15153



Claim Begin-End: AMC450289-AMC450304

3 Transfers



AZ15153-3

AMC449739-AMC451385

**NO
DOCUMENTS
FOUND**

NO DOCUMENTS FOUND
NO DOCUMENTS FOUND

NOTICE!!

These documents have been scanned!

Do not place un-scanned documents beneath this notice!

Do not remove this notice from this file!

GPO Jacket No. 560-102
Print Order 61540
Rise Business Services, LLC
Job=AZ15 7/9/2019



Box Number= AZ15153



Claim Begin-End: AMC450289-AMC450304

4 Annual Filings



AZ15153-3

AMC449739-AMC451385

Catherine Suda
Manager, U. S. Land & Assets

Teck American Incorporated
501 N Riverpoint Blvd., Suite 300
Spokane, WA 99202
PO Box 3087
Spokane, WA 99220-3087

439020
+1 509 747-6111 Tel
+1 509 922-8767 Fax
www.teck.com

450289

Teck

Certified - Return Receipt Requested

July 9, 2018

Bureau of Land Management
Arizona State Office
One North Central Avenue, Ste 800
Phoenix, Arizona 85004-4427

RECEIVED
BLM AZ STATE OFFICE
2018 JUL 12 P 1:52
PHOENIX, ARIZONA

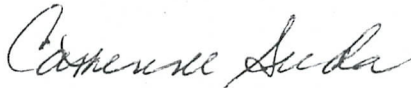
Re: BLM Mining Claim Maintenance Fee Filing and Notice of Intent to Hold for the Assessment Year Ending September 1, 2019 - BL Claims

Enclosed is the above-referenced BLM Mining Claim Maintenance Fee Filing and Notice of Intent to Hold for claims of the BL claim group. A check in the amount of \$48,825.00 is enclosed in payment of the maintenance fee for these claims:

$\$155.00 \times 315 \text{ claims} = \$48,825.00$

Please return a copy of the document with the BLM receipt stamp to my attention in Spokane.
Thank you for your assistance.

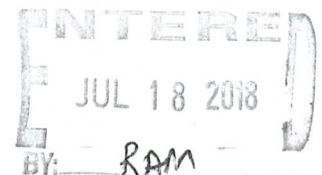
Sincerely,



Catherine Suda
Manager, U.S. Land & Assets

Enclosures:

Check # 211576



**BLM MINING CLAIM MAINTENANCE FEE FILING
AND
NOTICE OF INTENT TO HOLD
FOR THE ASSESSMENT YEAR ENDING ON SEPTEMBER 1, 2019**

Mining Claims Recordation
Arizona State Office
Bureau of Land Management
U.S. Department of the Interior
One North Central Avenue
Suite 800
Phoenix, AZ 85004-4427

RECEIVED
BLM AZ STATE OFFICE
2018 JUL 12 P 1:52
PHOENIX, ARIZONA

Teck American Incorporated, a Washington corporation, with an address at 501 N. Riverpoint Blvd., Suite 300, Spokane, Washington, 99202, controls the **BL** unpatented lode mining claims, located in Santa Cruz County, State of Arizona, described in Exhibit A attached hereto (the "Claims").

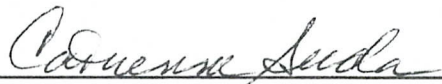
Teck American Incorporated submits, with this filing, the Federal claim maintenance fee required by Public Law 105-277, 112 Stat. 2681-232, 2681-235 and 43 C.F.R. Part 3834 and, to the extent applicable to the lands covered by any of the Claims, required by the statutes and regulations of the Act of August 11, 1955, 69 Stat. 681, and 43 C.F.R. Part 3730 (public lands withdrawn or reserved for power development), and the Act of April 8, 1948 (O&C lands), 62 Stat. 162, and 43 C.F.R. Subpart 3821.

The Federal claim maintenance fee of One Hundred Fifty-five Dollars (\$155.00), is submitted for each of the 315 Claims for the assessment year ending on September 1, 2019, for a total of \$48,825.00, in lieu of the assessment work and filing requirements of 30 U.S.C. §28-28e and 43 U.S.C. §1744(a) and (c) which have been suspended by Public Law 102-381, Public Law 103-66, Public Law 105-240 and Public Law 105-277.

The Federal claim maintenance fees are herewith paid for the assessment year ending on September 1, 2019, by Teck American Incorporated on its own behalf. Notice is hereby given that Teck American Incorporated intends to hold the Claims in good standing for the assessment year ending September 1, 2018.

Dated this 9 July 2018.

TECK AMERICAN INCORPORATED,
a Washington corporation

By: 
Name: Catherine Suda
Title: Manager, U.S. Land & Assets

**EXHIBIT A
TO
BLM MINING CLAIM MAINTENANCE FEE FILING
AND NOTICE OF INTENT TO HOLD
FOR THE ASSESSMENT YEAR ENDING ON SEPTEMBER 1, 2019**

This Exhibit A is attached to and made a part of that certain BLM Mining Claim Maintenance Fee Filing and Notice of Intent to Hold dated July 9, 2018, for the assessment year ending on September 1, 2019. The BLM Mining Claim Maintenance Fee Filing and Notice of Intent to Hold pertains to the following described group comprised of Three Hundred Fifteen (315) unpatented lode mining claims of the properties described herein below, all under the common control of Teck American Incorporated, and all of said group being located in the Patagonia (Duquesne) Mining District in portions or all of Sections 23-26 and 34-36, T23S, R16E, Sections 18, 30 and 31, T23S, R17E, Sections 1,2 and 10-15, T24S, R16E and Sections 6-7 and 18-19, T24S, R17E; Gila and Salt River Meridian, Santa Cruz County, State of Arizona, and more particularly described below.

Serial No	Claim Name	Township Range	Qtr Section	County Recorder
AMC439020	BL 1	24S 16E	15NE, 14NW	2016-05587
AMC439021	BL 2	24S 16E	14NE, 14NW	2016-05588
AMC439022	BL 3	24S 16E	15NE, 14NW	2016-05589
AMC439023	BL 4	24S 16E	14NE, NW	2016-05590
AMC439024	BL 5	24S 16E	10SE, 11SW, 14NW, 15NE	2016-05591
AMC439025	BL 6	24S 16E	11SE, SW, 14NE, NW	2016-05592
AMC439026	BL 7	24S 16E	10SE, 11SW	2016-05593
AMC439027	BL 8	24S 16E	11SE, SW	2016-05594
AMC439028	BL 9	24S 16E	10SE, SW	2016-05595
AMC439029	BL 10	24S 16E	11SE, SW	2016-05596
AMC439030	BL 11	24S 16E	10SE, 11SW	2016-05597
AMC439031	BL 12	24S 16E	11SE, SW	2016-05598
AMC439032	BL 13	24S 16E	10NE, SE, 11NW, SW	2016-05599
AMC439033	BL 14	24S 16E	11NE, SE, NW, SW	2016-05600
AMC439034	BL 15	24S 16E	10NE, 11NW	2016-05601
AMC439035	BL 16	24S 16E	11NE, 11NW	2016-05602

Teck American Incorporated

Exhibit A 1 of 3

PHOENIX, ARIZONA

JUL 11 2018 4:52

RECEIVED
BLM AZ STATE OFFICE

Serial No	Claim Name	Township Range	Qtr Section	County Recorder
AMC439036	BL 17	24S 16E	10NE, 11NW	2016-05603
AMC439037	BL 18	24S 16E	11NE, NW	2016-05604
AMC439038	BL 19	24S 16E	10NE, 11NW	2016-05605
AMC439039	BL 20	24S 16E	11NE, NW	2016-05606
AMC439040	BL 21	24S 16E	10N, 11NW	2016-05607
AMC439041	BL 22	24S 16E	11NE, NW	2016-05608
AMC439042	BL 23 Amended	24S 16E	2SW, 3SE, 10NE, 11NW	2018-02260
AMC439043	BL 24 Amended	24S 16E	2SE, SW, 11NE, NW	2018-02261
AMC439080	BL 61 Amended	23S 16E	23NW	2018-02262
AMC439081	BL 62	24S 16E	14SE	2016-05648
AMC439082	BL 63	24S 16E	14SE	2016-05649
AMC439083	BL 64	24S 16E	14SE	2016-05650
AMC439084	BL 65	24S 16E	14NE, SE	2016-05651
AMC439085	BL 66	24S 16E	14NE	2016-05652
AMC439086	BL 67	24S 16E	14NE	2016-05653
AMC439087	BL 68	24S 16E	14NE	2016-05654
AMC439088	BL 69	24S 16E	14NE	2016-05655
AMC439089	BL 70	24S 16E	14NE, 11SE	2016-05656
AMC439090	BL 71	24S 16E	11SE	2016-05657
AMC439091	BL 72	24S 16E	11SE	2016-05658
AMC439092	BL 73	24S 16E	11SE	2016-05659
AMC439093	BL 74	24S 16E	11NE, SE	2016-05660
AMC439094	BL 75	24S 16E	11NE	2016-05661
AMC439095	BL 76	24S 16E	11NE	2016-05662
AMC439096	BL 77	24S 16E	11NE	2016-05663

Teck American Incorporated

Exhibit A of 13

PHOENIX, ARIZONA

RECEIVED
BLM STATE OFFICE
JUN 12 P 4:52

Serial No	Claim Name	Township Range	Qtr Section	County Recorder
AMC439097	BL 78	24S 16E	11NE	2016-05664
AMC439098	BL 79 Amended	24S 16E	2NE	2018-02263
AMC439099	BL 80	24S 16E	2NE	2016-05666
AMC439100	BL 81	24S 16E	2NE	2016-05667
AMC439101	BL 82	24S 16E	2NE	2016-05668
AMC439102	BL 83 Amended	23S/24S 16E	35SE, SW/2NE, NW	2018-02264
AMC439103	BL 84	23S/24S 16E	35SE/2NE	2016-05670
AMC439104	BL 85 Amended	23S 16E	35SE, SW	2018-02265
AMC439105	BL 86	23S 16E	35SE	2016-05672
AMC439106	BL 87	23S 16E	35SE, SW	2016-05673
AMC439107	BL 88	23S 16E	35SE	2016-05674
AMC439108	BL 89 Amended	23S 16E	35SE, SW	2018-02266
AMC439109	BL 90	23S 16E	35SE	2016-05676
AMC439110	BL 91 Amended	23S 16E	35NE, SE, NW, SW	2018-02267
AMC439111	BL 92	23S 16E	35NE, SE	2016-05678
AMC439112	BL 93	23S 16E	35NE, NW	2016-05679
AMC439113	BL 94	23S 16E	35NE	2016-05680
AMC439114	BL 95	23S 16E	35NE, 35NW	2016-05681
AMC439115	BL 96	23S 16E	35NE	2016-05682
AMC439116	BL 97	23S 16E	35NE, 35NW	2016-05683
AMC439117	BL 98	23S 16E	35NE	2016-05684
AMC439118	BL 99	23S 16E	26SE, SW, 35NE, NW	2016-05685
AMC439119	BL 100	23S 16E	35NE, 26SE	2016-05686
AMC439120	BL 101	23S 16E	26SE, SW	2016-05687
AMC439121	BL 102	23S 16E	26SE	2016-05688

Teck American Incorporated

Exhibit A 3-13

PHOENIX, ARIZONA

RECEIVED
COUNTY CLERK
JAN 12 2017
1:52

Serial No	Claim Name	Township Range	Qtr Section	County Recorder
AMC439122	BL 103	23S 16E	26SE, SW	2016-05689
AMC439123	BL 104	23S 16E	26SE	2016-05690
AMC439124	BL 105	23S 16E	26SE, SW	2016-05691
AMC439125	BL 106	23S 16E	26SE	2016-05692
AMC439126	BL 107	23S 16E	26SE, SW	2016-05693
AMC439127	BL 108	23S 16E	26SE	2016-05694
AMC439128	BL 109	23S 16E	26NE, SE, NW, SW	2016-05695
AMC439129	BL 110	23S 16E	26NE, SE	2016-05696
AMC439130	BL 111	23S 16E	26NE, NW	2016-05697
AMC439131	BL 112	23S 16E	26NE	2016-05698
AMC439132	BL 113	23S 16E	26NE, NW	2016-05699
AMC439133	BL 114	23S 16E	26NE	2016-05700
AMC439134	BL 115	23S 16E	26NE, NW	2016-05701
AMC439135	BL 116	23S 16E	26NE	2016-05702
AMC439136	BL 117	23S 16E	23SE, SW, 26NE, NW	2016-05703
AMC439137	BL 118	23S 16E	26NE, 23SE	2016-05704
AMC439138	BL 119	23S 16E	26SE, SW	2016-05705
AMC439139	BL 120 Amended	23S 16E	23SE	2018-02268
AMC439140	BL 121 Amended	23S 16E	23SE	2018-02269
AMC439141	BL 122 Amended	23S 16E	23NE, SE, NW, SW	2018-02270
AMC439142	BL 123	23S 16E	23NE, SE	2016-05709
AMC439143	BL 124	23S 16E	23NE, NW	2016-05710
AMC439144	BL 125	23S 16E	23NE	2016-05711
AMC439145	BL 126	23S 16E	23NE, NW	2016-05712
AMC439146	BL 127	23S 16E	23NE	2016-05713

PHOENIX, ARIZONA
 RECEIVED
 BLM AZ STATE OFFICE
 2016-11-15
 2016-11-15

Serial No	Claim Name	Township Range	Qtr Section	County Recorder
AMC439147	BL 128	24S 16E	14SE, 13SW	2016-05714
AMC439148	BL 129	24S 16E	13SE,SW	2016-05715
AMC439149	BL 130	24S 16E	14SE, 13SW	2016-05716
AMC439150	BL 131	24S 16E	13SE,SW	2016-05717
AMC439151	BL 132	24S 16E	14SE, 13SW	2016-05718
AMC439152	BL 133	24S 16E	13SE,SW	2016-05719
AMC439153	BL 134	24S 16E	14NE,SE, 13NW,SW	2016-05720
AMC439154	BL 135	24S 16E	13NE,SE,NW,SW	2016-05721
AMC439155	BL 136	24S 16E	14NE, 13NW	2016-05722
AMC439156	BL 137	24S 16E	13NE,NW	2016-05723
AMC439157	BL 138	24S 16E	14NE, 13NW	2016-05724
AMC439158	BL 139	24S 16E	13NE,NW	2016-05725
AMC439159	BL 140	24S 16E	14NE, 13NW	2016-05726
AMC439160	BL 141	24S 16E	13NE,NW	2016-05727
AMC439161	BL 142	24S 16E	14NE, 13NW	2016-05728
AMC439162	BL 143	24S 16E	13NE,NW	2016-05729
AMC439163	BL 144	24S 16E	11SE, 12SW, 13NW, 14NE	2016-05730
AMC439164	BL 145	24S 16E	12SE, 13NW	2016-05731
AMC439165	BL 146	24S 16E	11SE, 12SW	2016-05732
AMC439166	BL 147	24S 16E	12SE,SW	2016-05733
AMC439167	BL 148	24S 16E	11SE, 12SW	2016-05734
AMC439168	BL 149	24S 16E	12SE,SW	2016-05735
AMC439169	BL 150	24S 16E	11SE, 12SW	2016-05736
AMC439170	BL 151	24S 16E	12SE,SW	2016-05737
AMC439171	BL 152	24S 16E	11NE,SE, 12NW,SW	2016-05738

Serial No	Claim Name	Township Range	Qtr Section	County Recorder
AMC439172	BL 153	24S 16E	12NE,SE,NW,SW	2016-05739
AMC439173	BL 154	24S 16E	11NE, 12NW	2016-05740
AMC439174	BL 155	24S 16E	12NE,NW	2016-05741
AMC439175	BL 156	24S 16E	11NE, 12NW	2016-05742
AMC439176	BL 157	24S 16E	12NE,NW	2016-05743
AMC439177	BL 158	24S 16E	11NE,12NW	2016-05744
AMC439178	BL 159	24S 16E	12NE,NW	2016-05745
AMC439179	BL 160	24S 16E	11NE, 12NW	2016-05746
AMC439180	BL 161	24S 16E	12NE, 12NW	2016-05747
AMC439181	BL 162	24S 16E	1SW, 2SE, 11NE, 12NW	2016-05748
AMC439182	BL 163	24S 16E	1SE,SW, 12NE,NW	2016-05749
AMC439183	BL 164 Amended	24S 16E	2SE, 1SW	2018-02271
AMC439184	BL 165	24S 16E	1SE,SW	2016-05751
AMC439185	BL 166 Amended	24S 16E	2SE, 1SW	2018-02272
AMC439186	BL 167	24S 16E	1SE,SW	2016-05753
AMC439187	BL 168 Amended	24S 16E	2SE, 1SW	2018-02273
AMC439188	BL 169	24S 16E	1SE,SW	2016-05755
AMC439189	BL 170	24S 16E	2NE,SE, 1NW,SW	2016-05756
AMC439190	BL 171	24S 16E	1NE,SE,NW,SW	2016-05757
AMC439191	BL 172	24S 16E	2NE, 1NW	2016-05758
AMC439192	BL 173	24S 16E	1NE,NW	2016-05759
AMC439193	BL 174	24S 16E	2NE, 1NW	2016-05760
AMC439194	BL 175	24S 16E	1NE,NW	2016-05761
AMC439195	BL 176	24S 16E	2NE, 1NW	2016-05762
AMC439196	BL 177	24S 16E	1NE,NW	2016-05763

Serial No	Claim Name	Township Range	Qtr Section	County Recorder
AMC439197	BL 178	24S 16E	2NE, 1NW	2016-05764
AMC439198	BL 179	24S 16E	1NE,NW	2016-05765
AMC439199	BL 180	23S/24S 16E	35SE, 36SW/2NE, 1NW	2016-05766
AMC439200	BL 181	23S/24S 16E	36SE,SW/1NE,NW	2016-05767
AMC439201	BL 182	23S 16E	35SE, 36SW	2016-05768
AMC439202	BL 183	23S 16E	36SE, 36SW	2016-05769
AMC439203	BL 184	23S 16E	35SE, 36SW	2016-05770
AMC439204	BL 185	23S 16E	36SE,SW	2016-05771
AMC439205	BL 186	23S 16E	35SE, 36SW	2016-05772
AMC439206	BL 187	23S 16E	36SE,SW	2016-05773
AMC439207	BL 188	23S 16E	35NE,SE, 36NW,SW	2016-05774
AMC439208	BL 189	23S 16E	36NE,SE,NW,SW	2016-05775
AMC439209	BL 190	23S 16E	35NE, 36NW	2016-05776
AMC439210	BL 191	23S 16E	36NE,NW	2016-05777
AMC439211	BL 192	23S 16E	35NE,NW	2016-05778
AMC439212	BL 193	23S 16E	36NE,NW	2016-05779
AMC439213	BL 194	23S 16E	35NE, 36NW	2016-05780
AMC439214	BL 195	23S 16E	36NE,NW	2016-05781
AMC439215	BL 196	23S 16E	25SW, 26SE, 35NE, 36NW	2016-05782
AMC439216	BL 197	23S 16E	25SE,SW, 36NE,NW	2016-05783
AMC439217	BL 198	23S 16E	26SE, 25SW	2016-05784
AMC439218	BL 199	23S 16E	25SE,SW	2016-05785
AMC439219	BL 200	23S 16E	26SE, 25SW	2016-05786
AMC439220	BL 201	23S 16E	25SE,SW	2016-05787
AMC439221	BL 202	23S 16E	26SE, 25SW	2016-05788

PHOENIX, ARIZONA

RECEIVED
BLM AZ STATE OFFICE
JUN 22 2016
1:52

Serial No	Claim Name	Township Range	Qtr Section	County Recorder
AMC439222	BL 203	23S 16E	25SE, SW	2016-05789
AMC439223	BL 204	23S 16E	26SE, 25SW	2016-05790
AMC439224	BL 205	23S 16E	25SE, SW	2016-05791
AMC439225	BL 206	23S 16E	26NE, SE, 25NW, SW	2016-05792
AMC439226	BL 207	23S 16E	25NE, SE, NW, SW	2016-05793
AMC439227	BL 208	23S 16E	26NE, 25NW	2016-05794
AMC439228	BL 209	23S 16E	25NE, NW	2016-05795
AMC439229	BL 210	23S 16E	26NE, 25NW	2016-05796
AMC439230	BL 211	23S 16E	25NE, NW	2016-05797
AMC439231	BL 212	23S 16E	26NE, 25NW	2016-05798
AMC439232	BL 213	23S 16E	25NE, NW	2016-05799
AMC439233	BL 214	23S 16E	23SE, 24SW, 25NW, 26NE	2016-05800
AMC439234	BL 215	23S 16E	24SE, SW, 25NW, NE	2016-05801
AMC439235	BL 216	23S 16E	23SE, 24SW	2016-05802
AMC439236	BL 217	23S 16E	24SE, SW	2016-05803
AMC439237	BL 218	23S 16E	24SE, SW	2016-05804
AMC439238	BL 219 Amended	23S 16E	24SE, SW	2018-02274
AMC439239	BL 220 Amended	23S 16E	23SE, 24SW	2018-02275
AMC439240	BL 221	23S 16E	23NE, 24NW	2016-05807
AMC439241	BL 222	24S 16E/17E	13SE/19NW	2016-05808
AMC439242	BL 223	24S 17E	19NW	2016-05809
AMC439243	BL 224	24S 16E/17E	13SE/19NW	2016-05810
AMC439244	BL 225	24S 17E	19NW	2016-05811
AMC439245	BL 226	24S 16E/17E	13SE/19NW, 18SW	2016-05812
AMC439246	BL 227	24S 17E	19NW, 18SW	2016-05813

Serial No	Claim Name	Township Range	Qtr Section	County Recorder
AMC439247	BL 228	24S 16E/17E	13NE,SE/18SW,SE	2016-05814
AMC439248	BL 229	24S 17E	18SW	2016-05815
AMC439249	BL 230	24S 16E/17E	13NE/ 18SW	2016-05816
AMC439250	BL 231	24S 17E	18SW	2016-05817
AMC439251	BL 232	24S 16E/17E	13NE/18SW	2016-05818
AMC439252	BL 233	24S 17E	18SW	2016-05819
AMC439253	BL 234	24S 16E/17E	13NE/18SW	2016-05820
AMC439254	BL 235	24S 17E	18SW	2016-05821
AMC439255	BL 236	24S 16E/17E	13NE/18NW,SW	2016-05822
AMC439256	BL 237	24S 17E	18NW,SW	2016-05823
AMC439257	BL 238	24S 16E/17E	13NE, 12SE/18NW	2016-05824
AMC439258	BL 239	24S 17E	18NW	2016-05825
AMC439259	BL 240	24S 16E/17E	12SE/18NW	2016-05826
AMC439260	BL 241	24S 17E	24S 17E, 18NW	2016-05827
AMC439261	BL 242	24S 16E/17E	12SE/18NW	2016-05828
AMC439262	BL 243	24S 17E	18NW	2016-05829
AMC439263	BL 244	24S 16E/17E	12SE/18NW, 7SW	2016-05830
AMC439264	BL 245	24S 17E	18NW, 7SW	2016-05831
AMC439265	BL 246	24S 16E/17E	12NE,SE/ 7SW	2016-05832
AMC439266	BL 247	24S 17E	7SW	2016-05833
AMC439267	BL 248	24S 16E/17E	12NE/ 7SW	2016-05834
AMC439268	BL 249	24S 17E	7SW	2016-05835
AMC439269	BL 250	24S 16E/17E	12NE/7SW	2016-05836
AMC439270	BL 251	24S 17E	7SW	2016-05837
AMC439271	BL 252	24S 16E/17E	12NE/7NW,SW	2016-05838

PHOENIX, ARIZONA

RECEIVED
 COUNTY RECORDER
 PHOENIX, ARIZONA
 2016-05-15

Serial No	Claim Name	Township Range	Qtr Section	County Recorder
AMC439272	BL 253 Amended	24S 17E	7NW,SW	2018-02276
AMC439273	BL 254	24S 16E/17E	12NE/7NW	2016-05840
AMC439274	BL 255 Amended	24S 17E	7NW	2018-02277
AMC439275	BL 256 Amended	24S 16E/17E	12NE, 1SE/7NW	2018-02278
AMC439276	BL 257 Amended	24S 16E	1NE,SE/6SW	2018-02279
AMC439277	BL 258 Amended	24S 17E	6SW	2018-02280
AMC439278	BL 259	24S 16E/17E	1NE/6SW	2016-05845
AMC439279	BL 260	24S 17E	6SW	2016-05846
AMC439280	BL 261	24S 16E/17E	1NE/6SW	2016-05847
AMC439281	BL 262 Amended	24S 17E	6SW	2018-02281
AMC439282	BL 263	24S 16E/17E	1NE/6NW,SW	2016-05849
AMC439283	BL 264 Amended	24S 17E	6NW,SW	2018-02282
AMC439284	BL 265	24S 16E/17E	1NE/6NW	2016-05851
AMC439285	BL 266 Amended	24S 17E	6NW	2018-02283
AMC439286	BL 267	23S 16E/24S 17E	36SE/ 6NW	2016-05853
AMC439287	BL 268 Amended	24S 17E	6NW	2018-02284
AMC439288	BL 269 Amended	24S 16E/17E	36SE/6NW	2018-02285
AMC439289	BL 270 Amended	23S16E/24S17E	36SE/6NW	2018-02286
AMC439290	BL 271 Amended	23S16E/23S17E/24S17E	36SE/31SW/6NW	2018-02287
AMC439291	BL 272 Amended	23S/24S 17E	31SW/6NW	2018-02288
AMC439292	BL 273	23S 16E/17E	36NE,SE/31SW	2016-05859
AMC439293	BL 274	23S 17E	31SW	2016-05860
AMC439294	BL 275	23S 16E/17E	36NE/31SW	2016-05861
AMC439295	BL 276	23S 17E	31SW	2016-05862
AMC439296	BL 277	23S 16E/17E	36NE/31SW	2016-05863

PHOENIX, ARIZONA
RECEIVED
BLM AZ STATE OFFICE
2016-05-31 12:53

Serial No	Claim Name	Township Range	Qtr Section	County Recorder
AMC439297	BL 278	23S 17E	31SW	2016-05864
AMC439298	BL 279	23S 16E/17E	36NE/31NW,SW	2016-05865
AMC439299	BL 280	23S 17E	31NW,SW	2016-05866
AMC439300	BL 281	23S 16E/17E	36NE/ 31NW,SW	2016-05867
AMC439301	BL 282	23S 17E	31NW	2016-05868
AMC439302	BL 283	23S 16E	25SE/31NW	2016-05869
AMC439303	BL 284	23S 17E	31NW	2016-05870
AMC439304	BL 285	23S 16E/17E	25SE/31NW	2016-05871
AMC439305	BL 286	23S 17E	31NW	2016-05872
AMC439306	BL 287	23S 16E/17E	25SE/31NW	2016-05873
AMC439307	BL 288	23S 17E	31NW	2016-05874
AMC439308	BL 289	23S 16E/17E	25SE/31NW, 30SW	2016-05875
AMC439309	BL 290	23S 17E	31NW, 30SW	2016-05876
AMC439310	BL 291	23S 16E/17E	25NE,SE/30SW	2016-05877
AMC439311	BL 292	23S 17E	30SW	2016-05878
AMC439312	BL 293	23S 16E/17E	25NE/30SW	2016-05879
AMC439313	BL 294	23S 17E	30SW	2016-05880
AMC439314	BL 295	23S 16E/17E	25NE/30SW	2016-05881
AMC439315	BL 296	23S 17E	30SW	2016-05882
AMC439316	BL 297	23S 16E/17E	25NE/30NW,SW	2016-05883
AMC439317	BL 298	23S 17E	30NW,SW	2016-05884
AMC439318	BL 299	23S 16E/17E	25NE, 24SE/30NW	2016-05885
AMC439319	BL 300	23S 17E	30NW	2016-05886
AMC439320	BL 301	23S 16E/17E	24SE/30NW	2016-05887
AMC439321	BL 302	23S 17E	30NW	2016-05888

PHOENIX, ARIZONA

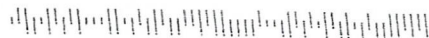
RECEIVED
BLM 47 STATE OFFICE
2016-05-18 1:53

Serial No	Claim Name	Township Range	Qtr Section	County Recorder
AMC439322	BL 303	23S 16E/17E	24SE/30NW	2016-05889
AMC439323	BL 304	23S 17E	30NW	2016-05890
AMC439324	BL 305	23S 16E/17E	24SE/30NW, 19SW	2016-05891
AMC439325	BL 306	23S 17E	30NW, 19SW	2016-05892
AMC439326	BL 307	23S 16E/17E	24SE/19SW	2016-05893
AMC439327	BL 308	23S 17E	19SW	2016-05894
AMC439328	BL 309	23S 16E/17E	24NE,SE/ 19SW	2016-05895
AMC439329	BL 310	23S 17E	19SW	2016-05896
AMC439330	BL 311	23S 16E/17E	24SE/19SW	2016-05897
AMC439331	BL 312	23S 17E	19SW	2016-05898
AMC439332	BL 313	23S 16E/17E	24SE/19SW	2016-05899
AMC439333	BL 314	23S 17E	19SW	2016-05900
AMC439334	BL 315	23S 16E/17E	24NW/19SW	2016-05901
AMC439335	BL 316	23S 17E	19NW	2016-05902
AMC439336	BL 317	24S 17E	19NE,NW	2016-05903
AMC439337	BL 318	24S 17E	19NE	2016-05904
AMC439338	BL 319	24S 17E	19NE,NW	2016-05905
AMC439339	BL 320	24S 17E	19NE	2016-05906
AMC439340	BL 321	24S 17E	19NE,NW, 18SE,SW	2016-05907
AMC439341	BL 322 Amended	24S 17E	19NE, 18SE	2018-02289
AMC439342	BL 323	24S 17E	18SE,SW	2016-05909
AMC439343	BL 324 Amended	24S 17E	18SE,SW	2018-02290
AMC439344	BL 325 Amended	24S 17E	18SE,SW	2018-02291
AMC439345	BL 326 Amended	24S 17E	18SE,SW	2018-02292
AMC439346	BL 327 Amended	24S 17E	18NE,NW	2018-02293

Serial No	Claim Name	Township Range	Qtr Section	County Recorder
AMC439347	BL 328	24S 17E	18NE,NW, 7SW,SE	2016-05914
AMC439348	BL 329	24S 17E	7SE,SW	2016-05915
AMC439349	BL 330	24S 17E	7SE,SW	2016-05916
AMC439350	BL 331	24S 17E	7SE,SW	2016-05917
AMC439351	BL 332 Amended	24S 17E	7NE,SE,NW,SW	2018-02294
AMC439352	BL 333 Amended	24S 17E	7NE,NW, 6SE,SW	2018-02295
AMC439353	BL 334 Amended	24S 17E	6SE,SW	2018-02296
AMC439354	BL 335 Amended	24S 17E	6SE, 6SW	2018-02297
AMC450289	BL 28A	23S 16E	34NE, SE,35 NW,SW	2018-02797
AMC450290	BL 29A	23S 16E	34NE, NW	2018-02797
AMC450291	BL 30A	23S 16E	34NE, 35NW	2018-02799
AMC450292	BL 32A	23S 16E	34NE, 35NW	2018-02800
AMC450293	BL 34A	23S 16E	34NE, 27SE, 35NW, 26SW	2018-02801
AMC450294	BL 36A	23S 16E	27SE, 26SW	2018-02802
AMC450295	BL 38A	23S 16E	27SE, 26SW	2018-02803
AMC450296	BL 40A	23S 16E	27SE, 26SW	2018-02804
AMC450297	BL 42A	23S 16E	27SE, 26SW	2018-02805
AMC450298	BL 44A	23S 16E	27NE,SE 26NW,SW	2018-02806
AMC450299	BL 46A	23S 16E	27NE, 26NW	2018-02807
AMC450300	BL 48A	23S 16E	27NE, 26NW	2018-02808
AMC450301	BL 50A	23S 16E	27NE, 26NW	2018-02809
AMC450302	BL 52A	23S 16E	27NE, 22SE, 26NW, 23SW	2018-02810
AMC450303	BL 54A	23S 16E	23SW	2018-02811
AMC450304	BL 56A	23S 16E	23SW	2018-02812

PHOENIX, ARIZONA

RECEIVED
BLM AZ STATE OFFICE
SEP 11 2018
P 1:53



CERTIFIED MAIL®



RECEIVED
BLM AZ STATE OFFICE 7 3040 0000 4073 2549

2018 JUL 12 P 1:51

PHOENIX, ARIZONA



U.S. POSTAGE >> PITNEY BOWES



ZIP 99201 \$ 007.83⁰
02 4W
0000336537 JUL 09 2018

Teck American Incorporated
PO Box 3087
Spokane, WA 99220-3087

Teck

Bureau of Land Management
State of Arizona
One North Central Avenue, Ste 800
Phoenix, AZ 85004-4427

United States Department of the Interior
Bureau of Land Management
DIV OF LANDS, MINRLS & ENERGY
ONE N CENTRAL AVE
PHOENIX, AZ 85004 -4427
Phone: 602-417-9200

Receipt

No: 4211548

Transaction #: 4326610
Date of Transaction: 07/13/2018

CUSTOMER:

TECK AMERICAN INCORPORATED
501 N RIVERPOINT BLVD STE 300
PO BOX 3087
SPOKANE, WA 99202-1649 US

LINE #	QTY	DESCRIPTION	REMARKS	UNIT PRICE	TOTAL
1	1.00	LOCATABLE MINERALS / MINING CLAIMS- NOT NEW-UNADJUD, ONE AUTH NO. ONLY / MINING CLAIM MONEY RECEIVED CASES: AMC439020/\$48825.00	MAINT 2019/315	- n/a -	48825.00
TOTAL:					\$48,825.00

PAYMENT INFORMATION				
1	AMOUNT:	48825.00	POSTMARKED:	N/A
	TYPE:	CHECK	RECEIVED:	07/12/2018
	CHECK NO:	211576		
	NAME:	TECK AMERICAN INCORPORATED 501 N RIVERPOINT BLVD STE 300 PO BOX 3087 SPOKANE WA 99202-1649 US		

REMARKS

This receipt was generated by the automated BLM Collections and Billing System and is a paper representation of a portion of the official electronic record contained therein.

NOTICE!!

These documents have been scanned!

Do not place un-scanned documents beneath this notice!

Do not remove this notice from this file!

GPO Jacket No. 560-102
Print Order 61540
Rise Business Services, LLC
Job=AZ15 7/9/2019



Box Number= AZ15153



Claim Begin-End: AMC450289-AMC450304

5 Miscellaneous



AZ15153-3

AMC449739-AMC451385

Teck

Sent Federal Express

April 5, 2018

BLM Arizona State Office
One North Central Avenue
Suite 800
Phoenix, AZ 85004-4427

Attn: Mining Claim Staff

RECEIVED
BLM, ARIZONA
2018 APR -6 P 1:41
PHOENIX, ARIZONA

Enclosed please find a check as described below for payment of fees associated with filing claim location certificates for the enclosed BL-A group of lode mining claims in Santa Cruz County, Arizona.

Processing Fee @ \$20	\$ 320
Location Fee @ \$37	\$ 592
2017-2018 claim maintenance fee @\$155	<u>\$ 2,480</u>
Total enclosed	\$ 3,392

Once you have completed processing these certificates, please return the original stamped location certificates to my attention at the Spokane address for recording in the county.

If you need any additional information please call 509-623-4567. Thank you.

Sincerely,

Catherine Suda

Catherine Suda
Manager, US Land & Assets

NOTICE!!

These documents have been scanned!

Do not place un-scanned documents beneath this notice!

Do not remove this notice from this file!

GPO Jacket No. 560-102
Print Order 61540
Rise Business Services, LLC
Job=AZ15 7/9/2019



Box Number= AZ15153



Claim Begin-End: AMC450289-AMC450304

6 Location Notices-Amendments and Supporting Documents



AZ15153-3

AMC449739-AMC451385

MINING CLAIM STATUS REPORT

Data Entered: 4/16/18

MTP Checked By: 4/16/18

GEO Checked By: 4/16/18

LEAD SERIAL NUMBER: AMC 450289 thru AMC 450304

NUMBER OF CLAIMS & TYPE:

16 LODE
 _____ PLACER
 _____ ASSOCIATION PLACER
 _____ MILL SITE
 _____ TUNNEL SITE

CHARGES:

Processing Fee @ \$20 = \$ 320
 Location Fee @ \$37 = \$ 592
 Maintenance Fee @ \$155 = \$ 2,480
 Add'l Maint Fee for Assoc Placer = \$ _____
 SUBTOTAL \$ _____
 Other Fees \$ _____
 Other Fees \$ _____
 TOTAL \$ 3,392

TOTAL ACREAGE: _____ Per Claim
 (Placer Only)

NUMBER OF LOCATORS: _____

DOCUMENTS RECEIVED VIA : Over-the-Counter [] Mail [X] TIMELY FILED: Yes [X] No []

LEGAL DESCRIPTION: T 33S R 16E SEC 34, 35, 26, 23, 27, 22
 T _____ R _____ SEC _____
 T _____ R _____ SEC _____
 T _____ R _____ SEC _____
 T _____ R _____ SEC _____

BLM [] FOREST SERVICE [] SUBJ TO PL 359: Yes [] No []
 WILDERNESS AREA []

SPLIT ESTATE: N/A [] SX [] PX [] OTHER []
 SRHA [] Was proper Notice filed if located on SHRA Land? Yes [] No []

RECONVEYED MINERALS ON BLM LAND REQUIRE OPENING ORDER FROM 1944 TO 1993:

Open to Entry On _____ N/A []

COMMENTS/STATUS: VOID [] PARTIALLY VOID [] PVT MINERALS [] WITHDRAWN LANDS []
 OTHER []

AMC450289

[] Claimant acknowledges that portions of the following claim(s) site(s) may be void or voidable.

Printed Name of Claimant _____ Signature of Claimant _____

*****FINAL ADJUDICATION*****

DATE _____ INITIALS _____

COPY

When recorded, return to:

Teck American Incorporated
501 North Riverpoint Blvd., Suite 300
Spokane, Washington 99202

LOCATION NOTICE FOR LOPE MINING CLAIM

NOTICE IS HEREBY GIVEN that the BL 28A lode
mining claim has been located by **Teck American Incorporated**
whose current mailing address is:
501 N. Riverpoint Blvd., Suite 300, Spokane, WA 99202

BLM
Date
Stamp

The general course of this claim is East to West and it is situated in Santa Cruz County,
Arizona. The claim boundary is described starting at the NE corner post #1 thence, first course, 217' S to
the SE corner post #2, thence, second course, 1184' S71W to post #3, thence, third course, 383' W to the
SW corner post #4, thence, fourth course, 600' N to the NW corner post #5, thence, fifth course, 1500' E
to corner post #1. This claim runs from the location monument on which this location notice is posted
approximately 750 feet due West to the West end line and 750 feet
due East to the East end line. This claim is marked by seven monuments, one at each
corner and one at the center of each end line of the claim along with angles and spurs.

The location monument on which this notice is posted is situated within Section 35, Township
23S, Range 16E, Gila and Salt River Base and Meridian, Arizona, and this claim encompasses
portions of the following Quarter Section(s), Section(s), Township(s) and Range(s):

NE 34, T.23S, R.16E

SE 34, T.23S, R.16E

NW 35, T.23S, R.16E

SW 35, T.23S, R.16E

Gila and Salt River Base and Meridian, Arizona.

The locality of this claim with reference to some natural object or permanent monument and additional
information (if any) concerning its locality are as follows: The northeast corner of the claim with
reference to a permanent monument is:

1050 feet North and 12000 feet West
from the Northeast corner of Section 6 T24S, R17E G&SRM.

DATED AND POSTED on the ground this 3/17/18

AGENT (s)

David Morris
(David Morris)

Form MCF100
Revised July, 2000

COPY

AMC450289

22

Staking Date:

BL 28A-30A, 32A, 34A, 36A, 38A
40A, 42A, 44A, 46A, 48A, 50A, 52A,
54A, 56A March 17, 2018

23

24

The northeast corner of BL 28A is located 1050' North
and 12,000' West from the northeast corner of
Section 6, T24S, R17E, G&SRM



56A

54A

52A

50A

48A

46A

44A

42A

40A

38A

36A

34A

32A

30A

29A

28A

26

25

30

29

27

COBY

COBY

31

32

34

35

36

PHOENIX, ARIZONA

2018 APR - 6 P 1:41

RECEIVED

RECEIVED

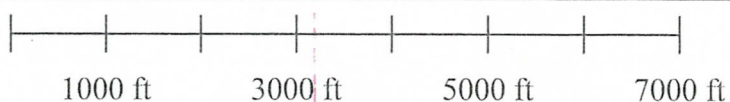
BL Claims

Santa Cruz County, Arizona
Teck American Incorporated
501 N. Riverpoint Blvd., Suite 300
Spokane, Washington 99202

6

5

AMC450289



When recorded, return to:

Teck American Incorporated
501 North Riverpoint Blvd., Suite 300
Spokane, Washington 99202

LOCATION NOTICE FOR LOPE MINING CLAIM

NOTICE IS HEREBY GIVEN that the BL 29A lode mining claim has been located by **Teck American Incorporated** whose current mailing address is:
501 N. Riverpoint Blvd., Suite 300, Spokane, WA 99202

BLM
Date
Stamp

The general course of this claim is East to West and it is situated in Santa Cruz County, Arizona. This claim is 1500 feet in length and 600 feet in width constituting 300 feet on each side of the centerline. This claim runs from the location monument on which this location notice is posted approximately 20 feet due East to the East end line and 1480 feet due West to the West end line. This claim is marked by six monuments, one at each corner and one at the center of each end line of the claim.

The location monument on which this notice is posted is situated within Section 35, Township 23S, Range 16E, Gila and Salt River Base and Meridian, Arizona, and this claim encompasses portions of the following Quarter Section(s), Section(s), Township(s) and Range(s):

NE 34, T.23S, R.16E

SE

NW 35, T.23S, R.16E

SW

Gila and Salt River Base and Meridian, Arizona.

The locality of this claim with reference to some natural object or permanent monument and additional information (if any) concerning its locality are as follows: The northeast corner of the claim with reference to a permanent monument is:

1650 feet North and 12000 feet West
from the Northeast corner of Section 6 T24S, R17E G&SRM.

DATED AND POSTED on the ground this 3/17/18

AGENT (s) _____

(David Morris)

Form MCF100
Revised July, 2000

AMC450290

22

Staking Date:

BL 28A-30A, 32A, 34A, 36A, 38A
40A, 42A, 44A, 46A, 48A, 50A, 52A,
54A, 56A March 17, 2018

23

24
The northeast corner of BL 28A is located 1050' North
and 12,000' West from the northeast corner of
Section 6, T24S, R17E, G&SRM



27

26

25

30

29

56A

54A

52A

50A

48A

46A

44A

42A

40A

38A

36A

34A

32A

30A

29A

28A

35

36

31

32

34

PHOENIX, ARIZONA

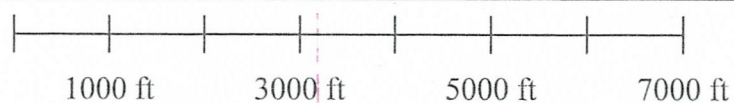
2018 APR - 6 P 1:41

BLM ARIZONA

RECEIVED

AMC450290
6
5

BL Claims
Santa Cruz County, Arizona
Teck American Incorporated
501 N. Riverpoint Blvd., Suite 300
Spokane, Washington 99202



When recorded, return to:

Teck American Incorporated
501 North Riverpoint Blvd., Suite 300
Spokane, Washington 99202

LOCATION NOTICE FOR LODE MINING CLAIM

NOTICE IS HEREBY GIVEN that the BL 30A lode mining claim has been located by **Teck American Incorporated** whose current mailing address is:
501 N. Riverpoint Blvd., Suite 300, Spokane, WA 99202

BLM
Date
Stamp

The general course of this claim is East to West and it is situated in Santa Cruz County, Arizona. This claim is 1500 feet in length and 600 feet in width constituting 300 feet on each side of the centerline. This claim runs from the location monument on which this location notice is posted approximately 20 feet due East to the East end line and 1480 feet due West to the West end line. This claim is marked by six monuments, one at each corner and one at the center of each end line of the claim.

The location monument on which this notice is posted is situated within Section 35, Township 23S, Range 16E, Gila and Salt River Base and Meridian, Arizona, and this claim encompasses portions of the following Quarter Section(s), Section(s), Township(s) and Range(s):

NE 34, T.23S, R.16E

SE

NW 35, T.23S, R.16E

SW

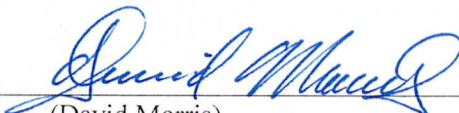
Gila and Salt River Base and Meridian, Arizona.

The locality of this claim with reference to some natural object or permanent monument and additional information (if any) concerning its locality are as follows: The northeast corner of the claim with reference to a permanent monument is:

2250 feet North and 12000 feet West
from the Northeast corner of Section 6 T24S, R17E G&SRM.

DATED AND POSTED on the ground this 3/17/18

AGENT (s)


(David Morris)

Form MCF100
Revised July, 2000

AMC450291

22

Staking Date:

BL 28A-30A, 32A, 34A, 36A, 38A
40A, 42A, 44A, 46A, 48A, 50A, 52A,
54A, 56A March 17, 2018

23

24

The northeast corner of BL 28A is located 1050' North
and 12,000' West from the northeast corner of
Section 6, T24S, R17E, G&SRM



27

26

25

30

29

56A

54A

52A

50A

48A

46A

44A

42A

40A

38A

36A

34A

32A

30A

29A

28A

35

36

31

32

34

PHOENIX, ARIZONA

2018 APR - 6 P 1:41

BL 28A-30A

TECK AMERICAN INCORPORATED

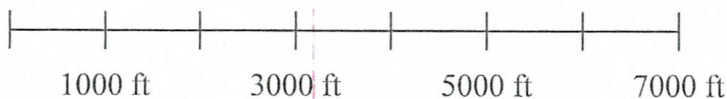
6

1620540W

5

BL Claims

Santa Cruz County, Arizona
Teck American Incorporated
501 N. Riverpoint Blvd., Suite 300
Spokane, Washington 99202



When recorded, return to:

Teck American Incorporated
501 North Riverpoint Blvd., Suite 300
Spokane, Washington 99202

LOCATION NOTICE FOR LODE MINING CLAIM

NOTICE IS HEREBY GIVEN that the BL 32A lode mining claim has been located by **Teck American Incorporated** whose current mailing address is:
501 N. Riverpoint Blvd., Suite 300, Spokane, WA 99202

BLM
Date
Stamp

The general course of this claim is East to West and it is situated in Santa Cruz County, Arizona. This claim is 1500 feet in length and 600 feet in width constituting 300 feet on each side of the centerline. This claim runs from the location monument on which this location notice is posted approximately 20 feet due East to the East end line and 1480 feet due West to the West end line. This claim is marked by six monuments, one at each corner and one at the center of each end line of the claim.

The location monument on which this notice is posted is situated within Section 35, Township 23S, Range 16E, Gila and Salt River Base and Meridian, Arizona, and this claim encompasses portions of the following Quarter Section(s), Section(s), Township(s) and Range(s):

NE 34, T.23S, R.16E

SE

NW 35, T.23S, R.16E

SW

Gila and Salt River Base and Meridian, Arizona.

The locality of this claim with reference to some natural object or permanent monument and additional information (if any) concerning its locality are as follows: The northeast corner of the claim with reference to a permanent monument is:

2850 feet North and 12000 feet West
from the Northeast corner of Section 6 T24S, R17E G&SRM.

DATED AND POSTED on the ground this 3/17/18

AGENT (s)


(David Morris)

Form MCF100
Revised July, 2000

AMC450292

22

Staking Date:

BL 28A-30A, 32A, 34A, 36A, 38A,
40A, 42A, 44A, 46A, 48A, 50A, 52A,
54A, 56A March 17, 2018

23

24

The northeast corner of BL 28A is located 1050' North
and 12,000' West from the northeast corner of
Section 6, T24S, R17E, G&SRM



27

26

25

30

29

56A

54A

52A

50A

48A

46A

44A

42A

40A

38A

36A

34A

32A

30A

29A

28A

34

35

36

31

32

PHOENIX, ARIZONA

2018 APR - 6 P 1:41

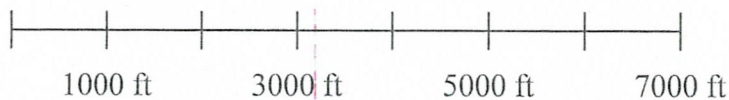
RECEIVED
BLM FIELD OFFICE

6
AMC 450292

BL Claims

Santa Cruz County, Arizona
Teck American Incorporated
501 N. Riverpoint Blvd., Suite 300
Spokane, Washington 99202

5



When recorded, return to:

Teck American Incorporated
501 North Riverpoint Blvd., Suite 300
Spokane, Washington 99202

LOCATION NOTICE FOR LODE MINING CLAIM

NOTICE IS HEREBY GIVEN that the BL 34A lode mining claim has been located by **Teck American Incorporated** whose current mailing address is:
501 N. Riverpoint Blvd., Suite 300, Spokane, WA 99202

BLM
Date
Stamp

The general course of this claim is East to West and it is situated in Santa Cruz County, Arizona. This claim is 1500 feet in length and 600 feet in width constituting 300 feet on each side of the centerline. This claim runs from the location monument on which this location notice is posted approximately 20 feet due East to the East end line and 1480 feet due West to the West end line. This claim is marked by six monuments, one at each corner and one at the center of each end line of the claim.

The location monument on which this notice is posted is situated within Section 35, Township 23S, Range 16E, Gila and Salt River Base and Meridian, Arizona, and this claim encompasses portions of the following Quarter Section(s), Section(s), Township(s) and Range(s):

NE 34, T.23S, R.16E

SE 27, T.23S, R.16E

NW 35, T.23S, R.16E

SW 26, T.23S, R.16E

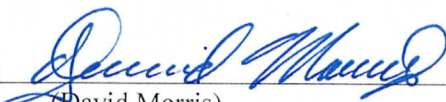
Gila and Salt River Base and Meridian, Arizona.

The locality of this claim with reference to some natural object or permanent monument and additional information (if any) concerning its locality are as follows: The northeast corner of the claim with reference to a permanent monument is:

3450 feet North and 12000 feet West
from the Northeast corner of Section 6 T24S, R17E G&SRM.

DATED AND POSTED on the ground this 3/17/18

AGENT (s)

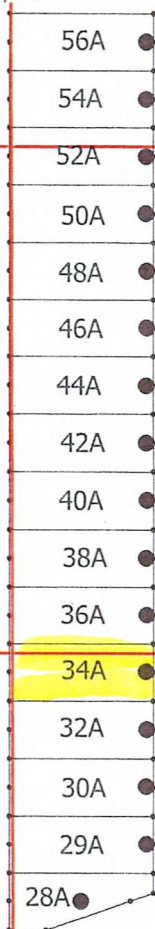

(David Morris)

Form MCF100
Revised July, 2000

AMC450293

22 Staking Date:
BL 28A-30A, 32A, 34A, 36A, 38A,
40A, 42A, 44A, 46A, 48A, 50A, 52A,
54A, 56A March 17, 2018

23 The northeast corner of BL 28A is located 1050' North
and 12,000' West from the northeast corner of
Section 6, T24S, R17E, G&SRM



27

26

25

30

29

34

35

36

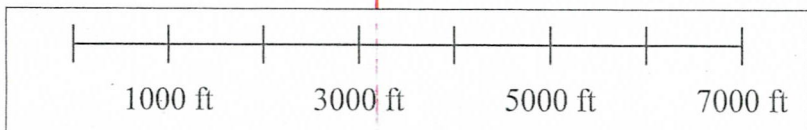
31

32

PHOENIX, ARIZONA
2018 APR - 6 P 1:42
RECEIVED
BLM - WASH DC

BL Claims
Santa Cruz County, Arizona
Teck American Incorporated
501 N. Riverpoint Blvd., Suite 300
Spokane, Washington 99202

AMC 450293
6
5



When recorded, return to:

Teck American Incorporated
501 North Riverpoint Blvd., Suite 300
Spokane, Washington 99202

LOCATION NOTICE FOR LODE MINING CLAIM

NOTICE IS HEREBY GIVEN that the BL 36A lode mining claim has been located by **Teck American Incorporated** whose current mailing address is:
501 N. Riverpoint Blvd., Suite 300, Spokane, WA 99202

BLM
Date
Stamp

The general course of this claim is East to West and it is situated in Santa Cruz County, Arizona. This claim is 1500 feet in length and 600 feet in width constituting 300 feet on each side of the centerline. This claim runs from the location monument on which this location notice is posted approximately 20 feet due East to the East end line and 1480 feet due West to the West end line. This claim is marked by six monuments, one at each corner and one at the center of each end line of the claim. The location monument on which this notice is posted is situated within Section 26, Township 23S, Range 16E, Gila and Salt River Base and Meridian, Arizona, and this claim encompasses portions of the following Quarter Section(s), Section(s), Township(s) and Range(s):

NE

SE 27, T.23S, R.16E

NW

SW 26, T.23S, R.16E

Gila and Salt River Base and Meridian, Arizona.

The locality of this claim with reference to some natural object or permanent monument and additional information (if any) concerning its locality are as follows: The northeast corner of the claim with reference to a permanent monument is:

4050 feet North and 12000 feet West
from the Northeast corner of Section 6 T24S, R17E G&SRM.

DATED AND POSTED on the ground this 3/17/18

AGENT (s)


(David Morris)

Form MCF100
Revised July, 2000

AMC450294

22

Staking Date:

BL 28A-30A, 32A, 34A, 36A, 38A,
40A, 42A, 44A, 46A, 48A, 50A, 52A,
54A, 56A March 17, 2018

23

24

The northeast corner of BL 28A is located 1050' North
and 12,000' West from the northeast corner of
Section 6, T24S, R17E, G&SRM



27

26

25

30

29

56A

54A

52A

50A

48A

46A

44A

42A

40A

38A

36A

34A

32A

30A

29A

28A

34

35

36

31

32

PHOENIX, ARIZONA

2018 APR - 6 P 1:42

RECEIVED
BLM ARIZONA6
AMC 450294

BL Claims
Santa Cruz County, Arizona
Teck American Incorporated
501 N. Riverpoint Blvd., Suite 300
Spokane, Washington 99202

5

1000 ft

3000 ft

5000 ft

7000 ft

When recorded, return to:

Teck American Incorporated
501 North Riverpoint Blvd., Suite 300
Spokane, Washington 99202

LOCATION NOTICE FOR LODE MINING CLAIM

NOTICE IS HEREBY GIVEN that the BL 38A lode mining claim has been located by **Teck American Incorporated** whose current mailing address is:
501 N. Riverpoint Blvd., Suite 300, Spokane, WA 99202

BLM
Date
Stamp

The general course of this claim is East to West and it is situated in Santa Cruz County, Arizona. This claim is 1500 feet in length and 600 feet in width constituting 300 feet on each side of the centerline. This claim runs from the location monument on which this location notice is posted approximately 20 feet due East to the East end line and 1480 feet due West to the West end line. This claim is marked by six monuments, one at each corner and one at the center of each end line of the claim.

The location monument on which this notice is posted is situated within Section 26, Township 23S, Range 16E, Gila and Salt River Base and Meridian, Arizona, and this claim encompasses portions of the following Quarter Section(s), Section(s), Township(s) and Range(s):

NE

SE 27, T.23S, R.16E

NW

SW 26, T.23S, R.16E

Gila and Salt River Base and Meridian, Arizona.

The locality of this claim with reference to some natural object or permanent monument and additional information (if any) concerning its locality are as follows: The northeast corner of the claim with reference to a permanent monument is:

4650 feet North and 12000 feet West
from the Northeast corner of Section 6 T24S, R17E G&SRM.

DATED AND POSTED on the ground this 3/17/18

AGENT (s) _____

(David Morris)

Form MCF100
Revised July, 2000

AMC450295

22

Staking Date:

BL 28A-30A, 32A, 34A, 36A, 38A,
40A, 42A, 44A, 46A, 48A, 50A, 52A,
54A, 56A March 17, 2018

23

24

The northeast corner of BL 28A is located 1050' North
and 12,000' West from the northeast corner of
Section 6, T24S, R17E, G&SRM



27

26

25

30

29

56A

54A

52A

50A

48A

46A

44A

42A

40A

38A

36A

34A

32A

30A

29A

28A

34

35

36

31

32

PHOENIX, ARIZONA
2018 APR - 6 P 1:42
RECEIVED
BLM

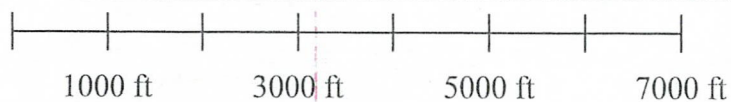
BL Claims

Santa Cruz County, Arizona
Teck American Incorporated
501 N. Riverpoint Blvd., Suite 300
Spokane, Washington 99202

6

5

AMC 450295



When recorded, return to:

Teck American Incorporated
501 North Riverpoint Blvd., Suite 300
Spokane, Washington 99202

LOCATION NOTICE FOR LODE MINING CLAIM

NOTICE IS HEREBY GIVEN that the BL 40A lode mining claim has been located by **Teck American Incorporated** whose current mailing address is:
501 N. Riverpoint Blvd., Suite 300, Spokane, WA 99202

BLM
Date
Stamp

The general course of this claim is East to West and it is situated in Santa Cruz County, Arizona. This claim is 1500 feet in length and 600 feet in width constituting 300 feet on each side of the centerline. This claim runs from the location monument on which this location notice is posted approximately 20 feet due East to the East end line and 1480 feet due West to the West end line. This claim is marked by six monuments, one at each corner and one at the center of each end line of the claim.

The location monument on which this notice is posted is situated within Section 26, Township 23S, Range 16E, Gila and Salt River Base and Meridian, Arizona, and this claim encompasses portions of the following Quarter Section(s), Section(s), Township(s) and Range(s):

NE

SE 27, T.23S, R.16E

NW

SW 26, T.23S, R.16E

Gila and Salt River Base and Meridian, Arizona.

The locality of this claim with reference to some natural object or permanent monument and additional information (if any) concerning its locality are as follows: The northeast corner of the claim with reference to a permanent monument is:

5250 feet North and 12000 feet West
from the Northeast corner of Section 6 T24S, R17E G&SRM.

DATED AND POSTED on the ground this 3/17/18

AGENT (s) _____

(David Morris)

Form MCF100
Revised July, 2000

AMC450296

22

Staking Date:

BL 28A-30A, 32A, 34A, 36A, 38A
40A, 42A, 44A, 46A, 48A, 50A, 52A,
54A, 56A March 17, 2018

23

24

The northeast corner of BL 28A is located 1050' North
and 12,000' West from the northeast corner of
Section 6, T24S, R17E, G&SRM



27

26

25

30

29

56A

54A

52A

50A

48A

46A

44A

42A

40A

38A

36A

34A

32A

30A

29A

28A

34

35

36

31

32

2018 APR - 6 P 1:42

RECEIVED
BLM OFFICE
PHOENIX, ARIZONA

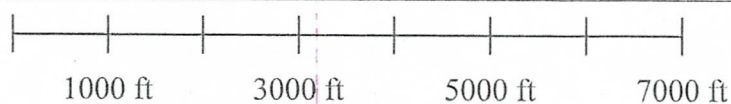
BL Claims

Santa Cruz County, Arizona
Teck American Incorporated
501 N. Riverpoint Blvd., Suite 300
Spokane, Washington 99202

6

5

AMC450296



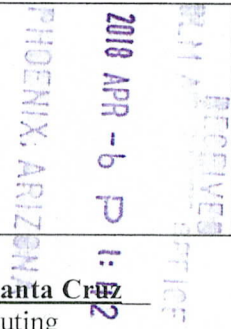
When recorded, return to:

Teck American Incorporated
501 North Riverpoint Blvd., Suite 300
Spokane, Washington 99202

LOCATION NOTICE FOR LODE MINING CLAIM

NOTICE IS HEREBY GIVEN that the BL 42A lode mining claim has been located by **Teck American Incorporated** whose current mailing address is:
501 N. Riverpoint Blvd., Suite 300, Spokane, WA 99202

BLM
Date
Stamp



The general course of this claim is East to West and it is situated in Santa Cruz County, Arizona. This claim is 1500 feet in length and 600 feet in width constituting 300 feet on each side of the centerline. This claim runs from the location monument on which this location notice is posted approximately 20 feet due East to the East end line and 1480 feet due West to the West end line. This claim is marked by six monuments, one at each corner and one at the center of each end line of the claim. The location monument on which this notice is posted is situated within Section 26, Township 23S, Range 16E, Gila and Salt River Base and Meridian, Arizona, and this claim encompasses portions of the following Quarter Section(s), Section(s), Township(s) and Range(s):

NE

SE 27, T.23S, R.16E

NW

SW 26, T.23S, R.16E

Gila and Salt River Base and Meridian, Arizona.

The locality of this claim with reference to some natural object or permanent monument and additional information (if any) concerning its locality are as follows: The northeast corner of the claim with reference to a permanent monument is:

5850 feet North and 12000 feet West
from the Northeast corner of Section 6 T24S, R17E G&SRM.

DATED AND POSTED on the ground this 3/17/18

AGENT (s)


(David Morris)

Form MCF100
Revised July, 2000

AMC450297

22

Staking Date:

BL 28A-30A, 32A, 34A, 36A, 38A,
40A, 42A, 44A, 46A, 48A, 50A, 52A,
54A, 56A March 17, 2018

23

24
The northeast corner of BL 28A is located 1050' North
and 12,000' West from the northeast corner of
Section 6, T24S, R17E, G&SRM



27

26

25

30

29

- 56A
- 54A
- 52A
- 50A
- 48A
- 46A
- 44A
- 42A
- 40A
- 38A
- 36A
- 34A
- 32A
- 30A
- 29A
- 28A

34

35

36

31

32

PHOENIX, ARIZONA

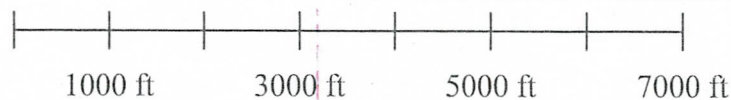
2018 APR - 6 P 1:43

RECEIVED
BLM AZ REGIONAL OFFICE

AMC 450297
6

BL Claims
Santa Cruz County, Arizona
Teck American Incorporated
501 N. Riverpoint Blvd., Suite 300
Spokane, Washington 99202

5



When recorded, return to:

Teck American Incorporated
501 North Riverpoint Blvd., Suite 300
Spokane, Washington 99202

LOCATION NOTICE FOR LODE MINING CLAIM

NOTICE IS HEREBY GIVEN that the BL 44A lode mining claim has been located by **Teck American Incorporated** whose current mailing address is:
501 N. Riverpoint Blvd., Suite 300, Spokane, WA 99202

BLM
Date
Stamp

PHOENIX, ARIZONA
2018 APR - 6 P 1:13

The general course of this claim is East to West and it is situated in Santa Cruz County, Arizona. This claim is 1500 feet in length and 600 feet in width constituting 300 feet on each side of the centerline. This claim runs from the location monument on which this location notice is posted approximately 20 feet due East to the East end line and 1480 feet due West to the West end line. This claim is marked by six monuments, one at each corner and one at the center of each end line of the claim.

The location monument on which this notice is posted is situated within Section 26, Township 23S, Range 16E, Gila and Salt River Base and Meridian, Arizona, and this claim encompasses portions of the following Quarter Section(s), Section(s), Township(s) and Range(s):

NE 27, T.23S, R.16E

SE 27, T.23S, R.16E

NW 26, T.23S, R.16E

SW 26, T.23S, R.16E

Gila and Salt River Base and Meridian, Arizona.

The locality of this claim with reference to some natural object or permanent monument and additional information (if any) concerning its locality are as follows: The northeast corner of the claim with reference to a permanent monument is:

6450 feet North and 12000 feet West
from the Northeast corner of Section 6 T24S, R17E G&SRM.

DATED AND POSTED on the ground this 3/17/18

AGENT (s)


(David Morris)

Form MCF100
Revised July, 2000

AMC450298

22

Staking Date:

BL 28A-30A, 32A, 34A, 36A, 38A
40A, 42A, 44A, 46A, 48A, 50A, 52A,
54A, 56A March 17, 2018

23

24

The northeast corner of BL 28A is located 1050' North
and 12,000' West from the northeast corner of
Section 6, T24S, R17E, G&SRM



27

26

25

30

29

56A	●
54A	●
52A	●
50A	●
48A	●
46A	●
44A	●
42A	●
40A	●
38A	●
36A	●
34A	●
32A	●
30A	●
29A	●
28A	●

34

35

36

31

32

PHOENIX, ARIZONA

2018 APR - 6 P 1:43

RECEIVED

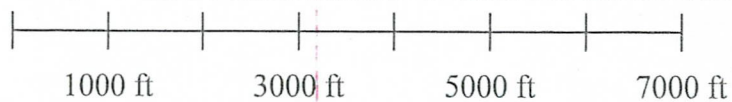
BL Claims

Santa Cruz County, Arizona
Teck American Incorporated
501 N. Riverpoint Blvd., Suite 300
Spokane, Washington 99202

5

6

AMC 450298



When recorded, return to:

Teck American Incorporated
501 North Riverpoint Blvd., Suite 300
Spokane, Washington 99202

LOCATION NOTICE FOR LOPE MINING CLAIM

NOTICE IS HEREBY GIVEN that the BL 46A lode
mining claim has been located by **Teck American Incorporated**
whose current mailing address is:
501 N. Riverpoint Blvd., Suite 300, Spokane, WA 99202

BLM
Date
Stamp

The general course of this claim is East to West and it is situated in Santa Cruz
County, Arizona. This claim is 1500 feet in length and 600 feet in width constituting
300 feet on each side of the centerline. This claim runs from the location monument on which this
location notice is posted approximately 20 feet due East to the East end line
and 1480 feet due West to the West end line. This claim is marked by six
monuments, one at each corner and one at the center of each end line of the claim.

The location monument on which this notice is posted is situated within Section 26, Township
23S, Range 16E, Gila and Salt River Base and Meridian, Arizona, and this claim encompasses
portions of the following Quarter Section(s), Section(s), Township(s) and Range(s):

NE 27, T.23S, R.16E

SE

NW 26, T.23S, R.16E

SW

Gila and Salt River Base and Meridian, Arizona.

The locality of this claim with reference to some natural object or permanent monument and additional
information (if any) concerning its locality are as follows: The northeast corner of the claim with
reference to a permanent monument is:

7050 feet North and 12000 feet West
from the Northeast corner of Section 6 T24S, R17E G&SRM.

DATED AND POSTED on the ground this 3/17/18

AGENT (s)


(David Morris)

Form MCF100
Revised July, 2000

AMC450299

22

Staking Date:

BL 28A-30A, 32A, 34A, 36A, 38A,
40A, 42A, 44A, 46A, 48A, 50A, 52A,
54A, 56A March 17, 2018

23

24

The northeast corner of BL 28A is located 1050' North
and 12,000' West from the northeast corner of
Section 6, T24S, R17E, G&SRM



27

26

25

30

29

56A

54A

52A

50A

48A

46A

44A

42A

40A

38A

36A

34A

32A

30A

29A

28A

34

35

36

31

32

PHOENIX, ARIZONA

2018 APR - 6 P 1:43

RECEIVED
BLM ARIZONA

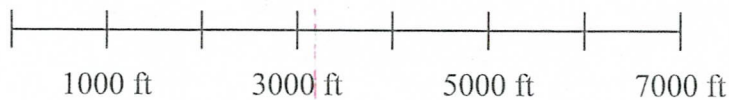
BL Claims

Santa Cruz County, Arizona
Teck American Incorporated
501 N. Riverpoint Blvd., Suite 300
Spokane, Washington 99202

5

6

AMC450299



When recorded, return to:

Teck American Incorporated
501 North Riverpoint Blvd., Suite 300
Spokane, Washington 99202

LOCATION NOTICE FOR LODE MINING CLAIM

NOTICE IS HEREBY GIVEN that the BL 48A lode mining claim has been located by **Teck American Incorporated** whose current mailing address is:
501 N. Riverpoint Blvd., Suite 300, Spokane, WA 99202

BLM
Date
Stamp

The general course of this claim is East to West and it is situated in Santa Cruz County, Arizona. This claim is 1500 feet in length and 600 feet in width constituting 300 feet on each side of the centerline. This claim runs from the location monument on which this location notice is posted approximately 20 feet due East to the East end line and 1480 feet due West to the West end line. This claim is marked by six monuments, one at each corner and one at the center of each end line of the claim.

The location monument on which this notice is posted is situated within Section 26, Township 23S, Range 16E, Gila and Salt River Base and Meridian, Arizona, and this claim encompasses portions of the following Quarter Section(s), Section(s), Township(s) and Range(s):

NE 27, T.23S, R.16E

SE

NW 26, T.23S, R.16E

SW

Gila and Salt River Base and Meridian, Arizona.

The locality of this claim with reference to some natural object or permanent monument and additional information (if any) concerning its locality are as follows: The northeast corner of the claim with reference to a permanent monument is:

7650 feet North and 12000 feet West
from the Northeast corner of Section 6 T24S, R17E G&SRM.

DATED AND POSTED on the ground this 3/17/18

AGENT (s)


(David Morris)

Form MCF100
Revised July, 2000

AMC450300

22

Staking Date:

BL 28A-30A, 32A, 34A, 36A, 38A
40A, 42A, 44A, 46A, 48A, 50A, 52A,
54A, 56A March 17, 2018

23

24

The northeast corner of BL 28A is located 1050' North
and 12,000' West from the northeast corner of
Section 6, T24S, R17E, G&SRM



27

26

25

30

29

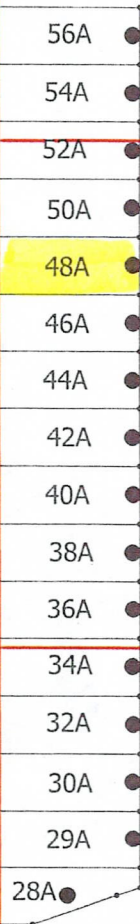
34

35

36

31

32



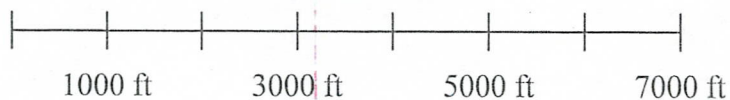
RECEIVED
BLM WASH DC OFFICE
2018 APR - 6 P 1:43
TUCUMCARI, ARIZONA

BL Claims
Santa Cruz County, Arizona
Teck American Incorporated
501 N. Riverpoint Blvd., Suite 300
Spokane, Washington 99202

5

6

AMC450300



When recorded, return to:

Teck American Incorporated
501 North Riverpoint Blvd., Suite 300
Spokane, Washington 99202

LOCATION NOTICE FOR LODE MINING CLAIM

NOTICE IS HEREBY GIVEN that the BL 50A lode mining claim has been located by **Teck American Incorporated** whose current mailing address is:
501 N. Riverpoint Blvd., Suite 300, Spokane, WA 99202

BLM
Date
Stamp

The general course of this claim is East to West and it is situated in Santa Cruz County, Arizona. This claim is 1500 feet in length and 600 feet in width constituting 300 feet on each side of the centerline. This claim runs from the location monument on which this location notice is posted approximately 20 feet due East to the East end line and 1480 feet due West to the West end line. This claim is marked by six monuments, one at each corner and one at the center of each end line of the claim.

The location monument on which this notice is posted is situated within Section 26, Township 23S, Range 16E, Gila and Salt River Base and Meridian, Arizona, and this claim encompasses portions of the following Quarter Section(s), Section(s), Township(s) and Range(s):

NE 27, T.23S, R.16E

SE

NW 26, T.23S, R.16E

SW

Gila and Salt River Base and Meridian, Arizona.

The locality of this claim with reference to some natural object or permanent monument and additional information (if any) concerning its locality are as follows: The northeast corner of the claim with reference to a permanent monument is:

8250 feet North and 12000 feet West
from the Northeast corner of Section 6 T24S, R17E G&SRM.

DATED AND POSTED on the ground this 3/17/18

AGENT (s) David Morris
(David Morris)

Form MCF100
Revised July, 2000

AMC450301

22

Staking Date:

BL 28A-30A, 32A, 34A, 36A, 38A,
40A, 42A, 44A, 46A, 48A, 50A, 52A,
54A, 56A March 17, 2018

23

24
The northeast corner of BL 28A is located 1050' North
and 12,000' West from the northeast corner of
Section 6, T24S, R17E, G&SRM



27

26

25

30

29

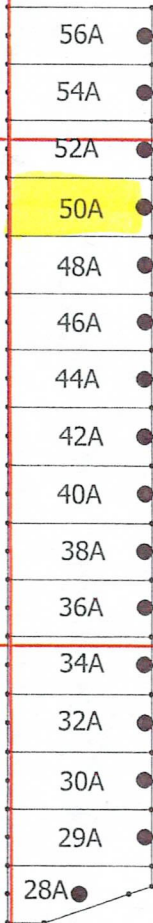
34

35

36

31

32



PHOENIX, ARIZONA

2018 APR - 6 P 1:43

RECEIVED

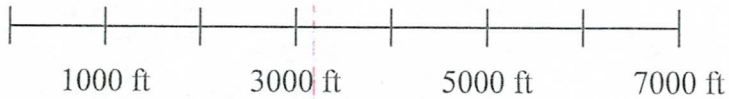
BLM

BL Claims
Santa Cruz County, Arizona
Teck American Incorporated
501 N. Riverpoint Blvd., Suite 300
Spokane, Washington 99202

5

6

AMC450301



When recorded, return to:

Teck American Incorporated
501 North Riverpoint Blvd., Suite 300
Spokane, Washington 99202

LOCATION NOTICE FOR LODE MINING CLAIM

NOTICE IS HEREBY GIVEN that the BL 52A lode mining claim has been located by **Teck American Incorporated** whose current mailing address is:
501 N. Riverpoint Blvd., Suite 300, Spokane, WA 99202

BLM
Date
Stamp

PHOENIX, ARIZONA

2018 APR -6 P 1:43

RECEIVED
BLM
PHOENIX, ARIZONA

The general course of this claim is East to West and it is situated in Santa Cruz County, Arizona. This claim is 1500 feet in length and 600 feet in width constituting 300 feet on each side of the centerline. This claim runs from the location monument on which this location notice is posted approximately 20 feet due East to the East end line and 1480 feet due West to the West end line. This claim is marked by six monuments, one at each corner and one at the center of each end line of the claim.

The location monument on which this notice is posted is situated within Section 26, Township 23S, Range 16E, Gila and Salt River Base and Meridian, Arizona, and this claim encompasses portions of the following Quarter Section(s), Section(s), Township(s) and Range(s):

NE 27, T.23S, R.16E

SE 22, T.23S, R.16E

NW 26, T.23S, R.16E

SW 23, T.23S, R.16E

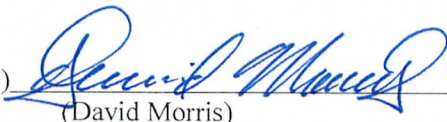
Gila and Salt River Base and Meridian, Arizona.

The locality of this claim with reference to some natural object or permanent monument and additional information (if any) concerning its locality are as follows: The northeast corner of the claim with reference to a permanent monument is:

8850 feet North and 12000 feet West
from the Northeast corner of Section 6 T24S, R17E G&SRM.

DATED AND POSTED on the ground this 3/17/18

AGENT (s)


(David Morris)

Form MCF100
Revised July, 2000

AMC450302



22

Staking Date:

BL 28A-30A, 32A, 34A, 36A, 38A
40A, 42A, 44A, 46A, 48A, 50A, 52A,
54A, 56A March 17, 2018

23

24

The northeast corner of BL 28A is located 1050' North
and 12,000' West from the northeast corner of
Section 6, T24S, R17E, G&SRM

27

26

25

30

29

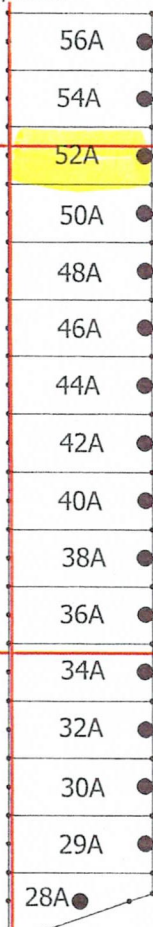
34

35

36

31

32



PHOENIX, ARIZONA

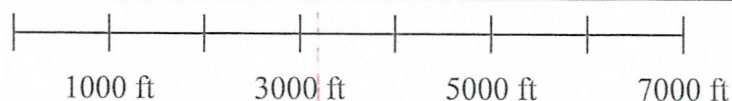
2018 APR - 6 P 1:43

RECEIVED

BL Claims
Santa Cruz County, Arizona
Teck American Incorporated
501 N. Riverpoint Blvd., Suite 300
Spokane, Washington 99202

5

AMC 450302 6



When recorded, return to:

Teck American Incorporated
501 North Riverpoint Blvd., Suite 300
Spokane, Washington 99202

LOCATION NOTICE FOR LODE MINING CLAIM

NOTICE IS HEREBY GIVEN that the BL 54A lode mining claim has been located by **Teck American Incorporated** whose current mailing address is:
501 N. Riverpoint Blvd., Suite 300, Spokane, WA 99202

BLM
Date
Stamp

PHOENIX, ARIZONA
2018 APR - 6 P 1:43
RECEIVED

The general course of this claim is East to West and it is situated in Santa Cruz County, Arizona. This claim is 1500 feet in length and 600 feet in width constituting 300 feet on each side of the centerline. This claim runs from the location monument on which this location notice is posted approximately 20 feet due East to the East end line and 1480 feet due West to the West end line. This claim is marked by six monuments, one at each corner and one at the center of each end line of the claim.

The location monument on which this notice is posted is situated within Section 23, Township 23S, Range 16E, Gila and Salt River Base and Meridian, Arizona, and this claim encompasses portions of the following Quarter Section(s), Section(s), Township(s) and Range(s):

NE

SE

NW

SW 23, T.23S, R.16E

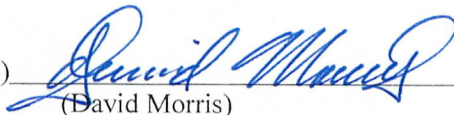
Gila and Salt River Base and Meridian, Arizona.

The locality of this claim with reference to some natural object or permanent monument and additional information (if any) concerning its locality are as follows: The northeast corner of the claim with reference to a permanent monument is:

9450 feet North and 12000 feet West
from the Northeast corner of Section 6 T24S, R17E G&SRM.

DATED AND POSTED on the ground this 3/17/18

AGENT (s)


(David Morris)

Form MCF100
Revised July, 2000

AMC450303

22

Staking Date:

BL 28A-30A, 32A, 34A, 36A, 38A
40A, 42A, 44A, 46A, 48A, 50A, 52A,
54A, 56A March 17, 2018

23

24

The northeast corner of BL 28A is located 1050' North
and 12,000' West from the northeast corner of
Section 6, T24S, R17E, G&SRM



27

26

25

30

29

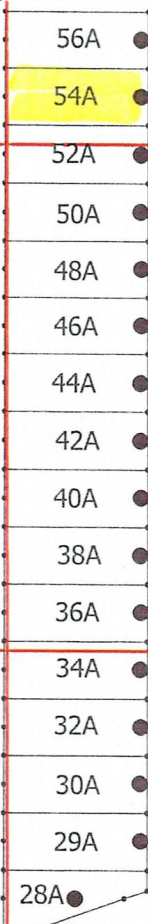
34

35

36

31

32



PHOENIX, ARIZONA

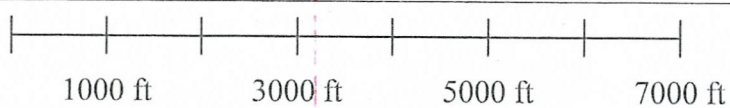
2018 APR - 6 P 1:43

RECEIVED

ANCH 450303 6

BL Claims
Santa Cruz County, Arizona
Teck American Incorporated
501 N. Riverpoint Blvd., Suite 300
Spokane, Washington 99202

5



When recorded, return to:

Teck American Incorporated
501 North Riverpoint Blvd., Suite 300
Spokane, Washington 99202

LOCATION NOTICE FOR LODE MINING CLAIM

NOTICE IS HEREBY GIVEN that the BL 56A lode mining claim has been located by **Teck American Incorporated** whose current mailing address is:
501 N. Riverpoint Blvd., Suite 300, Spokane, WA 99202

BLM
Date
Stamp

RECEIVED
2018 APR - 6 P 1:43
PHOENIX, ARIZONA

The general course of this claim is East to West and it is situated in Santa Cruz County, Arizona. This claim is 1500 feet in length and 600 feet in width constituting 300 feet on each side of the centerline. This claim runs from the location monument on which this location notice is posted approximately 20 feet due East to the East end line and 1480 feet due West to the West end line. This claim is marked by six monuments, one at each corner and one at the center of each end line of the claim.

The location monument on which this notice is posted is situated within Section 23, Township 23S, Range 16E, Gila and Salt River Base and Meridian, Arizona, and this claim encompasses portions of the following Quarter Section(s), Section(s), Township(s) and Range(s):

NE

SE

NW

SW 23, T.23S, R.16E

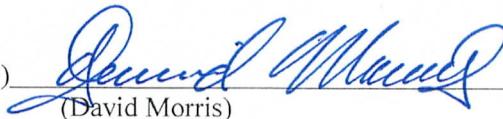
Gila and Salt River Base and Meridian, Arizona.

The locality of this claim with reference to some natural object or permanent monument and additional information (if any) concerning its locality are as follows: The northeast corner of the claim with reference to a permanent monument is:

10050 feet North and 12000 feet West
from the Northeast corner of Section 6 T24S, R17E G&SRM.

DATED AND POSTED on the ground this 3/17/18

AGENT (s)


(David Morris)

Form MCF100
Revised July, 2000

AMC450304



22

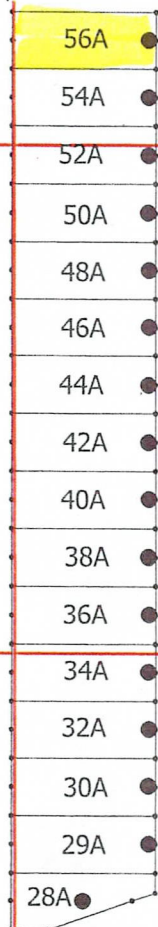
Staking Date:

BL 28A-30A, 32A, 34A, 36A, 38A
40A, 42A, 44A, 46A, 48A, 50A, 52A,
54A, 56A March 17, 2018

23

24

The northeast corner of BL 28A is located 1050' North
and 12,000' West from the northeast corner of
Section 6, T24S, R17E, G&SRM



27

26

25

30

29

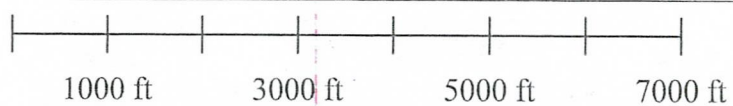
34

35

36

31

32



PHOENIX, ARIZONA

2018 APR - 6 P 1:43

RECEIVED

BLM

AMC 450304
6
5

BL Claims
Santa Cruz County, Arizona
Teck American Incorporated
501 N. Riverpoint Blvd., Suite 300
Spokane, Washington 99202

RUN TIME: 09:34 AM

DEPARTMENT OF INTERIOR
BUREAU OF LAND MANAGEMENT

RUN DATE: 04/16/2018
Page 1 of 1

Input Parameters for Geographic Report with Land

System Id = CR

Admin State = AZ

Geo State =

Casetype Begins With

Case Disp Txt = AUTHORIZED, CANCELLED, EXPIRED, PENDING, REJECTED, VOID, WITHDRAWN

Mer Twp Rng =

Section =

Mtrs = 14 0230S 0160E 022, 14 0230S 0160E 023, 14 0230S 0160E 026, 14 0230S 0160E 027, 14 0230S 0160E 034, 14 0230S 0160E 035, 14 0230S
0160E 999

Commodity =

Commodity Txt =

Pending Org =

Pend Org Decode =

Total Rows Returned: 4

NO WARRANTY IS MADE BY BLM FOR USE OF THE DATA
FOR PURPOSES NOT INTENDED BY BLM

RUN TIME: 09:34 AM

Adm State: AZ

UNITED STATES DEPARTMENT OF INTERIOR
BUREAU OF LAND MANAGEMENT
GEOGRAPHIC REPORT WITH LAND
Sorted by Serial Number

RUN DATE: 04/16/2018
Page 1 of 1

Serial Number: AZA 021379

Total Case Acres: 0.550

<u>Casetype</u>	<u>Case Disp</u>	14	0230S	0160E	<u>Sect</u>	<u>Sur Typ</u>	<u>Sur Num</u>	<u>Suff</u>	<u>Subdivision</u>	<u>Act Pend</u>
276701	AUTHORIZED				034	TR	37			

Serial Number: AZA 022607

Total Case Acres: 0.300

<u>Casetype</u>	<u>Case Disp</u>	14	0230S	0160E	<u>Sect</u>	<u>Sur Typ</u>	<u>Sur Num</u>	<u>Suff</u>	<u>Subdivision</u>	<u>Act Pend</u>
276701	AUTHORIZED				034	FF			M&B	

Serial Number: AZA 033853

Total Case Acres: 1.040

<u>Casetype</u>	<u>Case Disp</u>	14	0230S	0160E	<u>Sect</u>	<u>Sur Typ</u>	<u>Sur Num</u>	<u>Suff</u>	<u>Subdivision</u>	<u>Act Pend</u>
276701	AUTHORIZED				034	TR	39			

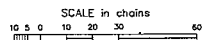
Serial Number: AZA 033870P3

Total Case Acres: 28.970

<u>Casetype</u>	<u>Case Disp</u>	14	0230S	0160E	<u>Sect</u>	<u>Sur Typ</u>	<u>Sur Num</u>	<u>Suff</u>	<u>Subdivision</u>	<u>Act Pend</u>
220200	AUTHORIZED				022	FF			MS2193 EXCPT PART MS701;	

PROTRACTION DIAGRAM NO 76 OFFICIALLY FILED 06/23/1960

TRACON FIELD OFFICE



WARNING STATEMENT

WARNING STATEMENT
This plot is the Bureau's Record of Title, and should be used only as a graphic display of the township survey data. Records hereon do not reflect title changes which may have been effected by lateral movements of rivers or other bodies of water. Refer to the cadastral surveys for official survey information.

INDEX TO SEGREGATED TRACTS

[illegible]

FOR ORDERS AFFECTING DISPOSAL OR USE OF
UNIDENTIFIED LANDS WITHDRAWN FOR CLASSIFICATION,
MINERALS, WATER AND/OR OTHER PUBLIC PURPOSES,
REFER TO INDEX OF MISCELLANEOUS DOCUMENTS.

MDS 723 NE

724 NW

725 SW

726 SE

All Tp included in Wall Coronado NF Proc 1121 4/17/1911

All Tip included in Determination Area Pl. 167 AR 020546
3/4/1959

CURRENT TO	NW	GSR Mer
8-5-2015	ACAD	T 23 S
		R 16 E

UNSURVEYED TOWNSHIP 23 SOUTH RANGE 16 EAST OF THE GILA AND SALT RIVER MERIDIAN, ARIZONA

PROTRACTION DIAGRAM NO 76 OFFICIALLY FILED 06/23/1980

SANTA CRUZ COUNTY
TUCSON FIELD OFFICE

STATUS OF PUBLIC DOMAIN
LAND AND MINERAL TITLES

MTP SUPPL SEC 35

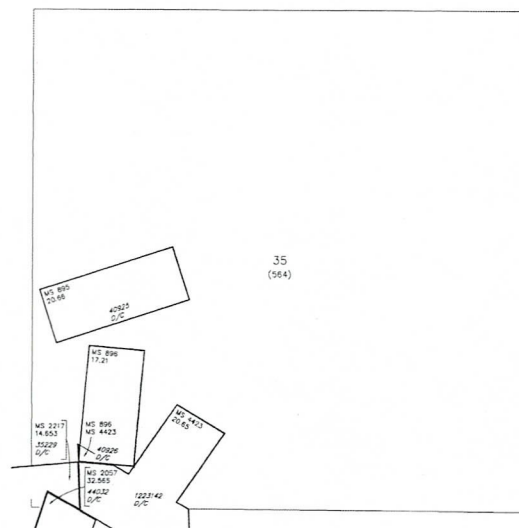
INDEX TO SEGREGATED TRACTS				
RE-SURVEY	ORIGINAL SURVEY			
TRACT NO	T	R	SEC	SUBDIVISION

FOR ORDERS AFFECTING DISPOSAL OR USE OF
UNIDENTIFIED LANDS WITHIN TOWNSHIP FOR CLASSIFICATION
MINERAL, WATER AND/OR OTHER PUBLIC PURPOSES,
REFER TO INDEX OF MISCELLANEOUS DOCUMENTS.

MOIS 726 SE

All Is included in MOI Coronado NF Proc 1121 4/17/1911

All Is included in Determination Area PL 167 AR 020546
3/4/1959



SCALE in chains
0 5 10 20

WARNING STATEMENT
This plat is the Bureau's Record of Title, and should be used
only as a graphic display of the township survey data. It
does not reflect the changes which may have been
affected by lateral movements of rivers or other bodies of water.
Refer to the existing surveys for official survey information.

CURRENT TO		NW	NO 2	
8-5-2015	ACAD		GSR Mer	
			T 23 S	
			R 16 E	

Page 1 of 2



ORIGIN ID: GEGA (509) 747-6111
TONIA STEWART

501 N. RIVERPOINT BLVD.
SUITE 300
SPOKANE, WA 99202
UNITED STATES US

SHIP DATE: 05APR18
ACTWGT: 1.00 LB
CAD: 101858610/INET3980

BILL SENDER

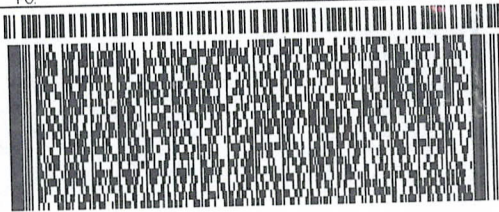
TO MINING CLAIM STAFF
BLM ARIZONA STATE OFFICE
ONE NORTH CENTRAL AVENUE
SUITE 800
PHOENIX AZ 85004

(602) 417-9300

REF: NEW CLAIMS

INV.
PO:

DEPT:



FedEx
Express



J011101280107

552J11/132DC45

FRI - 06 APR 10:30A
PRIORITY OVERNIGHT

TRK# 7719 2908 4682
0201

XH ZSYA

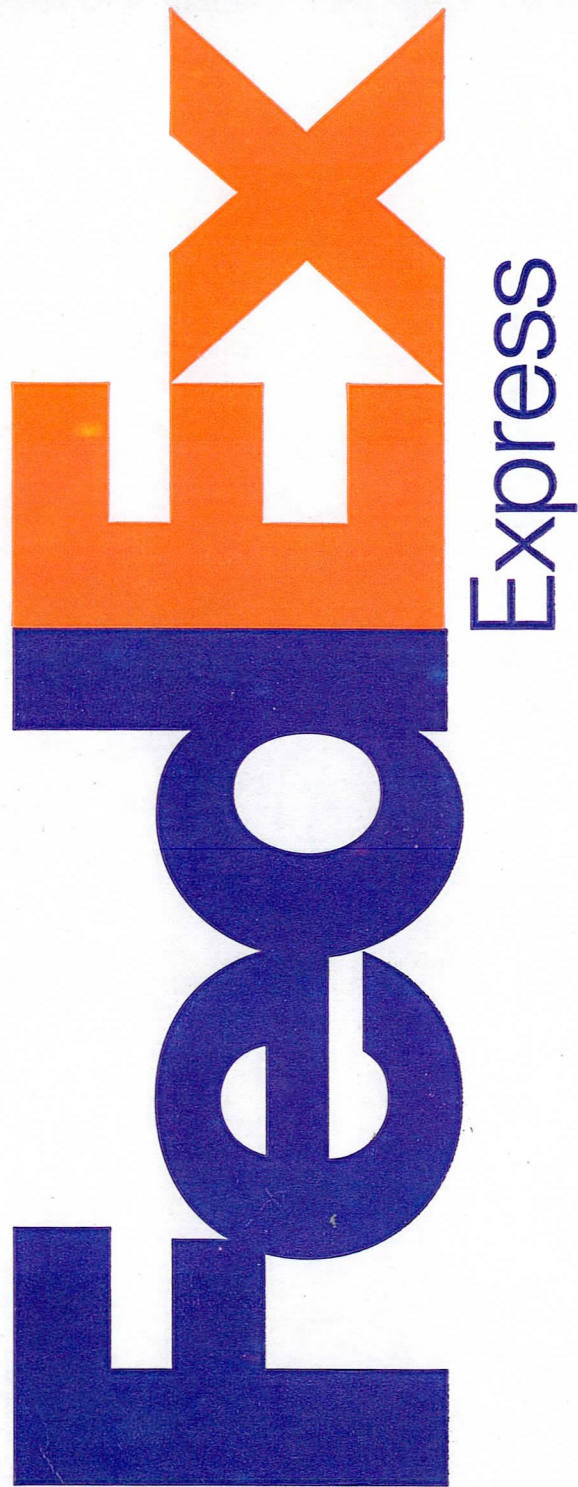
85004
PHX
AZ-US



Extremely Urgent



◀ Insert shipping
document here.



Align top of FedEx Express® shipping label here.

Envelope

RECEIVED
BLM AND CHIEF OFFICE
2018 APR - 6 P 1:41
PHOENIX, ARIZONA